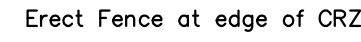


- Under the guidance of an arborist, erect a fence at the critical root zone (CRZ) of trees where the CRZ is established as being 10 centimetres from the trunk of a tree for every centimetre of trunk diameter at breast height. The CRZ is calculated as  $DBH \times 10 \text{ cm.}$ ;
- Do not place any material or equipment within the CRZ of the tree;
- Do not attach any signs, notices or posters to the tree;
- Do not raise or lower the existing grade within the CRZ without approval.
- Tunnel or bore when digging within the CRZ of a tree;
- Do not damage the root system, trunk, or branches or any tree;
- Ensure that exhaust fumes from all equipment are NOT directed towards any tree canopy.



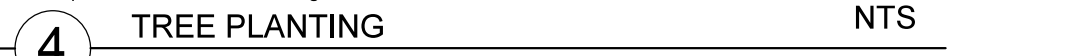
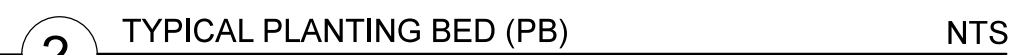
TURF AREAS TO BE SOD C/W 150MM DEPTH TOPSOIL ON APPROVED SUBGRADE. SOD TO BE NUMBER ONE GRADE TURFGRASS NURSERY SOD per NSGA - Fine Fescue/Kentucky Bluegrass Sod.

ALL PLANT MATERIAL TO MEET CNLA STANDARDS, AND BE APPROVED BY LANDSCAPE ARCHITECT PRIOR TO PLANTING.

ALL WORK TO INCLUDE 1 YEAR WARRANTY FROM DATE OF FINAL ACCEPTANCE.

WEEDING OF BEDS, WATERING, SWEEPING HARD SURFACES.

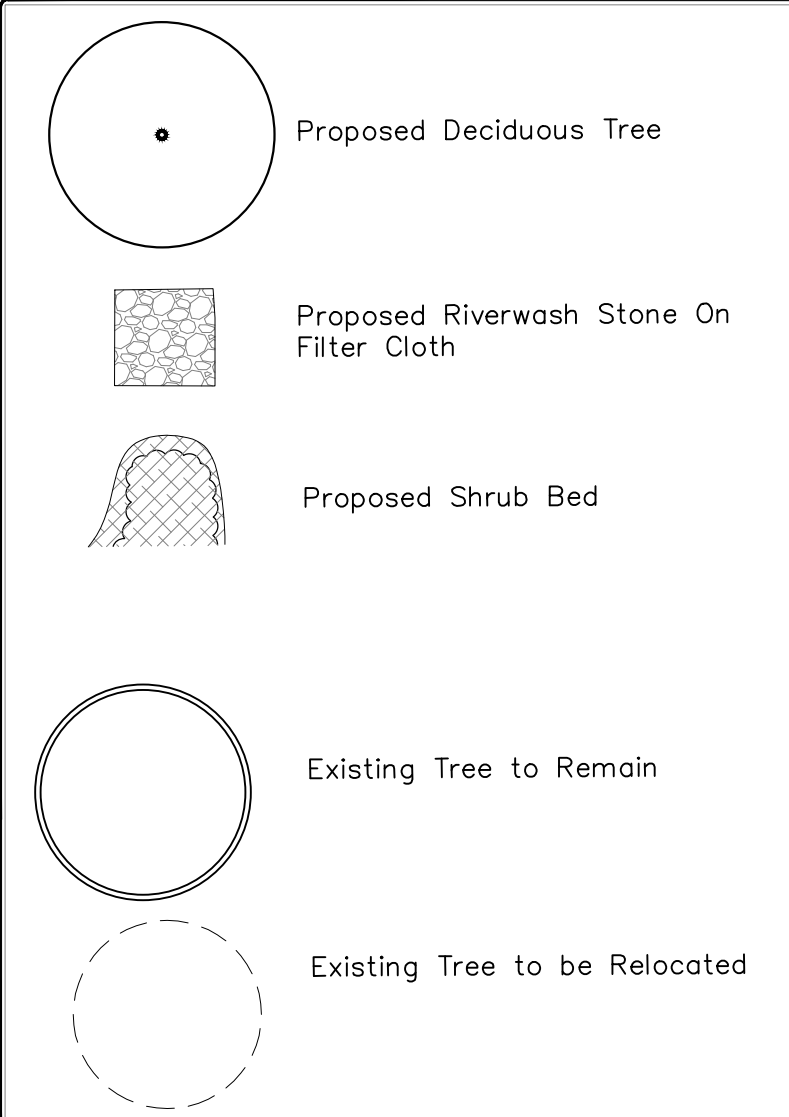
The Landscape Plan is to be read in conjunction with the grading and survey plan, underground services engineering drawings, construction details and contract documents and cannot be used for construction until signed by the landscape architect. Bare root material to be planted in season only. All plant material locations to be staked on site by the landscape architect. All plant material locations to be staked on site by the landscape architect prior to planting. All trees to be preserved on or directly adjacent to the site will be protected. Plant material are to be installed a minimum of: 3.0m away from any part of any hydro transformer, 3.0m corridor between a fire hydrant and the curb, a 2.5m radius beside or behind a fire hydrant, 2.0m from any servicing/utility line or structure.



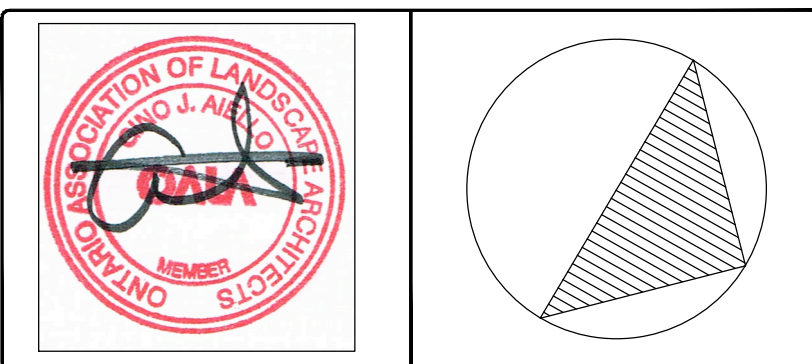
Plant List - Trees - Prestige Fisher					
Plant List	Qty	Botanical Name	Common Name	Size	Condition
AC	2	<i>Quercus laevis</i>	Serviceberry	60cm cal	B + 8 specimen
CA	1	<i>Cornus alternifolia</i>	Pagoda Dogwood	60cm cal	B + 8 specimen
CR	1	<i>Cornus racemosa</i>	Grey Dogwood	60cm cal	B + 8 specimen
CR	1	<i>Cornus mas</i> var. <i>lanceolata</i> 'terrebris'	Red Dogwood	60cm cal	B + 8 specimen
MH	2	<i>Malus 'Hannest Gold'</i>	Hannest Gold Crabapple	60cm cal	B + 8 specimen
MR	1	<i>Malus 'Robinson'</i>	Robinson Crabapple	60cm cal	B + 8 specimen
MRS	1	<i>Malus 'Red Splendor'</i>	Red Splendor Crabapple	60cm cal	B + 8 specimen
MS	1	<i>Malus 'Red Splendor'</i>	Sugar Tree Crabapple	60cm cal	B + 8 specimen
PS	1	<i>Syringa reticulata 'Honey Silk'</i>	Honey Silk Tree Lilac	60cm cal	B + 8 specimen
Plant List - Shrubs - Prestige Fisher					
Plant List	Qty	Botanical Name	Common Name	Size	Condition
HK	110	<i>Hypericum californicum</i>	St. John's Wort	40cm Ht	Pot



Drawing Remains the Property of Gino J. Aiello  
Landscape Architect. Copyright Reserved by  
Gino J. Aiello Landscape Architect. Do Not Use  
or Reproduce Without Approval of Gino J. Aiello.  
**Do Not Use For Construction Unless Signed By  
Landscape Architect.** Contractor is Responsible  
for Verification of Site Locations of all Utilities.  
Report any Discrepancies Between Site and  
Drawing Immediately to Gino J. Aiello.



3	For Site Plan Control	October 22 2015
2	For Coordination	August 31 2015
1	For Review	August 1 2015
No.	Revision	Date
R E V I S I O N S		



Owner	Prestige Design & Construction (Fisher Ltd.)
-------	--

Consultant

---

**Gino J. Aiello landscape architect** [www.gjala.com](http://www.gjala.com)  
gino@gjala.com (613) 852 1343  
50 Camelot Drive, Nepean, Ontario K2G 5X8

Project **Townhouse Development**  
1110 Fisher Avenue  
Ottawa, Ontario

Drawing

Landscape Plan

Drawn By: Design By:	GJA	Sheet Number	L 1
Date:	August 2015		
Scale:	1:125		